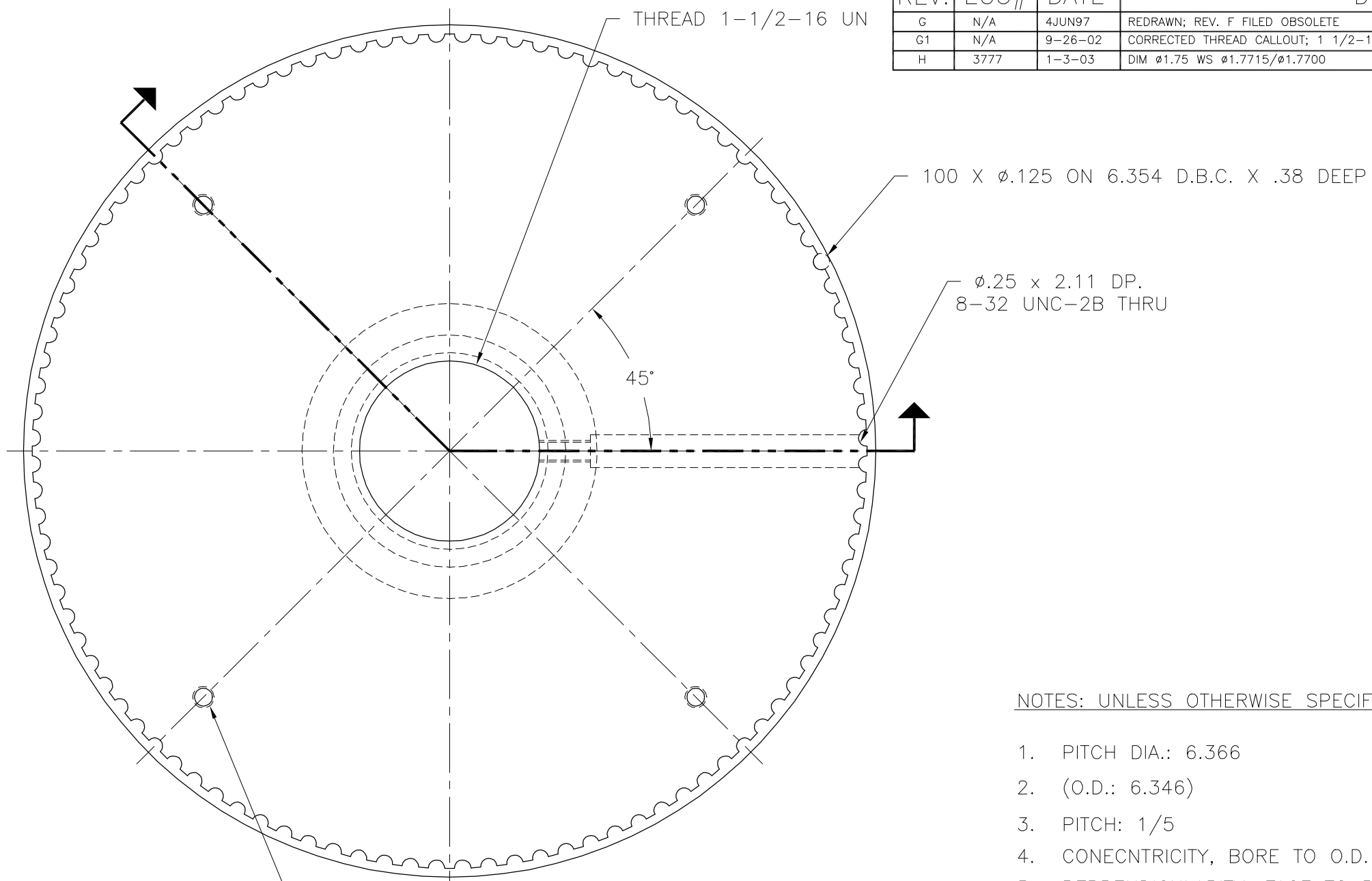


REV.	ECO#	DATE	DESCRIPTION	BY
G	N/A	4JUN97	REDRAWN; REV. F FILED OBSOLETE	MAB
G1	N/A	9-26-02	CORRECTED THREAD CALLOUT; 1 1/2-16 UN WAS 1 1/2-16 UNF	AFN
H	3777	1-3-03	DIM $\phi 1.75$ WS $\phi 1.7715/\phi 1.7700$	DY

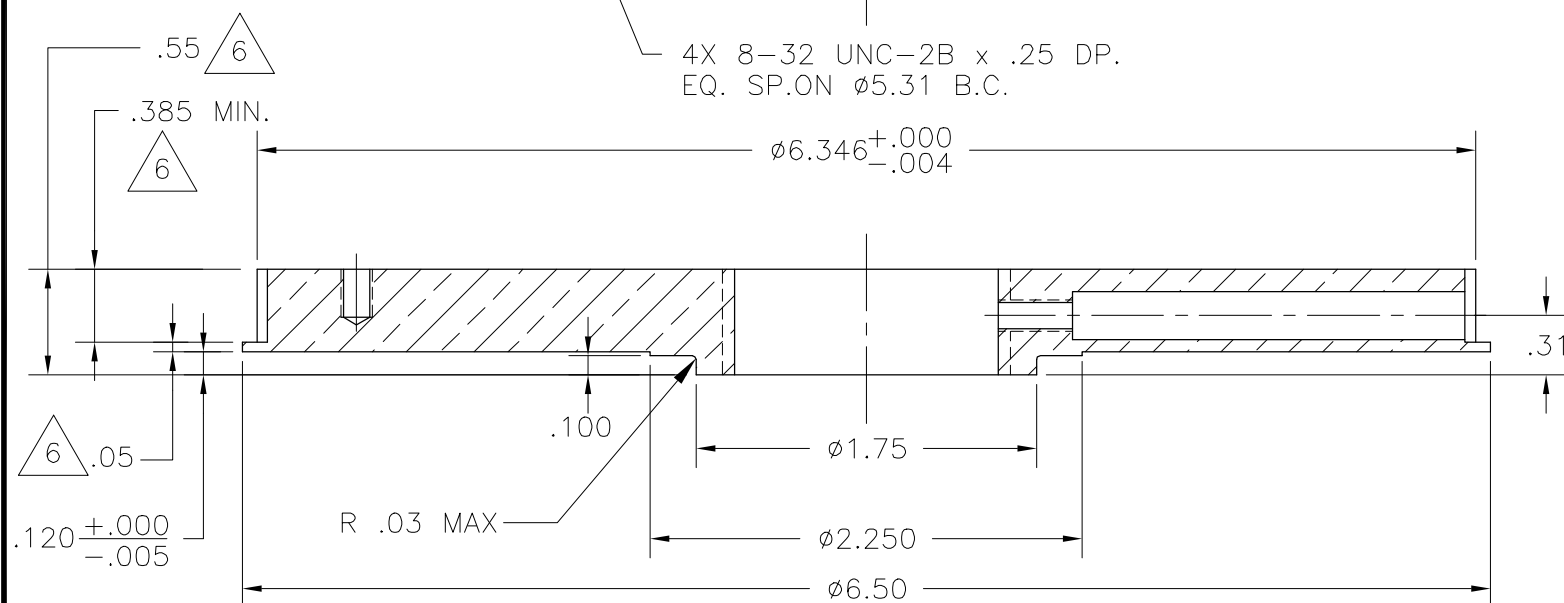


NOTES: UNLESS OTHERWISE SPECIFIED

- PITCH DIA.: 6.366
- (O.D.: 6.346)
- PITCH: 1/5
- CONCENTRICITY, BORE TO O.D. .007 T.I.R.
- PERPENDICULARITY, FACE TO BORE .008 T.I.R.

6. UTILIZE AVAILABLE TOLERANCE AS REQUIRED TO ENSURE .385 MINIMUM DIMENSION.

MATR'L: A360, DIE CAST AL.  
FINISH: ALODINE, GOLD



TOLERANCES		Sea Tel		
UNLESS OTHERWISE SPECIFIED		SCALE: FULL	APPROVED BY:	DRAWN BY: MAB
X.X	= $\pm .050$ "	DATE: 4JUN97		DRAWING SIZE: B
X.XX	= $\pm .020$ "	TITLE: TIMING PULLEY, 100 TOOTH (TRAIN AXIS)		
X.XXX	= $\pm .005$ "			
ANGLES	= $\pm 30^\circ$	MODEL: 2094 KU-BAND, 3995	SHEET: 1 OF 1	DRAWING NUMBER: 113184
3rd ANGLE PROJECTION				REVISION: H